
Installation & Quick Start Guide

WI-CONNECT Wireless Adaptor/Antenna



1. Introduction

Congratulations on the purchase of your WI-CONNECT Wireless Adaptor/Antenna. This unit is designed for quick and simple DIY installation on a yacht or power boat. The mounting brackets and suction pads are NOT designed for safe fixing of the antenna whilst a vessel is moving or for extended exposure to the extreme environmental conditions found at sea. It is strongly recommended that your Wireless antenna is removed and placed inside the vessel when in motion or not in use.

i Before operating the unit you should familiarise yourself with the complete user manual supplied with the product.

2. Before you start

The WI-CONNECT comes complete with a MEMORY STICK that includes all necessary drivers for the following operating systems;

- Microsoft Windows XP®, Windows Vista® and Windows 7®
- Apple Mac OS X 10.4, 10.5, 10.6, 10.7 and 10.8

i Do not plug in the WI-CONNECT to the USB port of your computer until you have inserted the driver MEMORY STICK.

3. Mounting the WI-CONNECT Antenna

The WI-CONNECT should be mounted outside, with the best possible line of sight of the wireless hotspot antenna that you wish to connect to. There are two methods of mounting the WI-CONNECT using the kit of parts included in the box;

- Sucker Cup Mount
- Pole Mount

i Neither of these two mounting methods should be used when the vessel is in motion.

Sucker Cup Mounting

The most common mounting method is to use the four sucker cups to temporarily stick the WI-CONNECT to the outside of the boat.

First, feed the USB cable through the two aluminium tube clips and then place one tube clip at the bottom of the WI-CONNECT tube body and one tube clip towards the top of the tube body just touching the pan head screw – see photo. Secure the clips by gently tightening the fixing bolts – do not over-tighten

Insert and secure a sucker cup in each of the four holes in the aluminium tube clips, using the supplied clear plastic thumb nuts.

After first ensuring that the surface of the GRP where you wish to mount the WI-CONNECT is clean, lightly moisten each sucker cup and then gently push the antenna on to the boat's side until the sucker cups are flat.

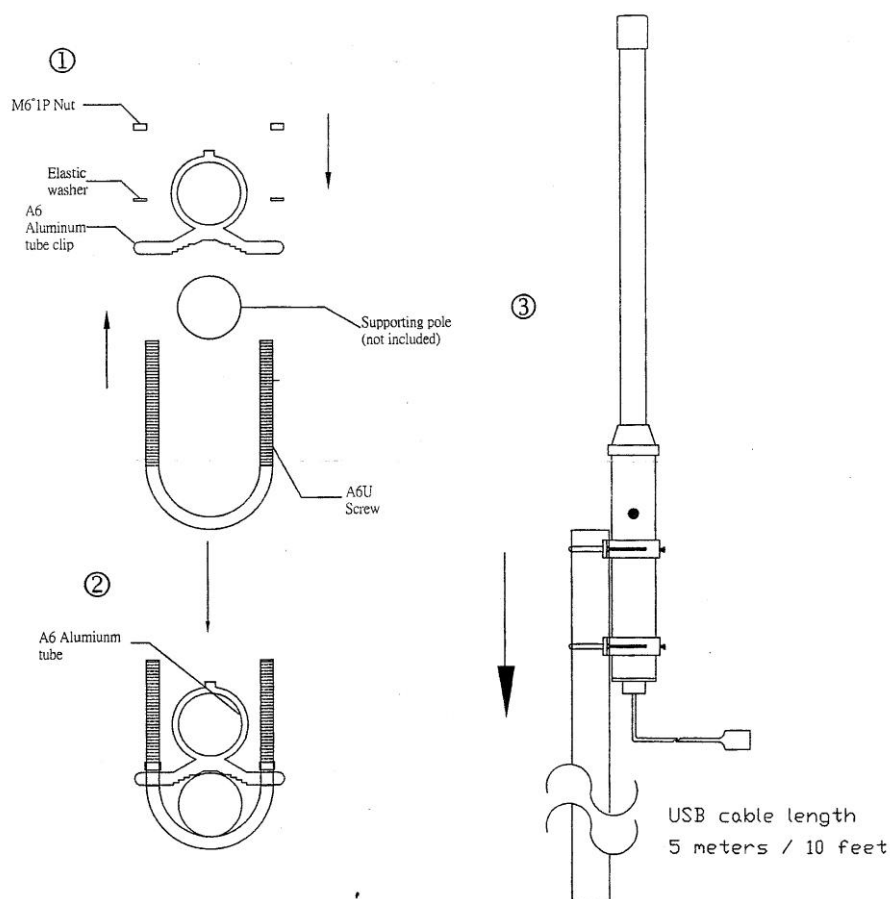
This method of mounting is ideal for yachts and power boats and the WI-CONNECT can stay mounted in this manner for many days. Removal is quick and simple by gently inserting a finger nail under each sucker cup and levering them off one by one.



Pole Mounting

For a more permanent mounting arrangement or when you need to use a pole to get more height, it is possible to mount the WI-CONNECT using the U bolts, nuts and washers supplied.

The diagram below shows the three steps to mounting the WI-CONNECT on a suitable pole (up to 50mm in diameter). Please note that the mounting pole is not supplied.



4. Installing the WI-CONNECT on Windows

The WI-CONNECT is supplied with Windows compatible drivers that allow it to be used as a second Wireless Network Adaptor on your laptop. You can either; install the drivers and use the normal Windows Wireless Connection function to scan, select and connect to a wireless hotspot or you can use the free Realtek Wireless Lan Utility software which is also supplied on the Memory Stick.

It is very important that you do not plug the WI-CONNECT in to a USB port on your computer unless you have the WI-CONNECT Drivers Memory Stick inserted in your PC. By plugging in the WI-CONNECT you will initiate the Windows "Found New Hardware Wizard" which will not be able to complete correctly without the Drivers on the Memory Stick being present. The installation process varies depending upon which Operating System your computer has, so please ensure that you follow the correct procedure.

Installation for Windows Vista and Windows 7 (On-Line)

By far the easiest method of installation, if your PC is running Windows Vista or Windows 7, is to connect the PC to the internet, as you would normally do, using the internal wireless adaptor and then plug the WI-CONNECT in to a spare USB port on the laptop.

Windows will detect the new hardware and display the message shown in Figure 1. It will then automatically search the on-line Windows Update server for the correct drivers. Depending upon the speed of your PC and internet connection this should take between 20 seconds and a couple of minutes to complete.

You can click on the message and the Window in Figure 2 will be displayed giving you the status of the driver installation.

After the correct driver has been found, downloaded and installed the Window in Figure 3 should be displayed. The drivers are now installed correctly and you are ready to use the WI-CONNECT to find and connect to a wireless hotspot. Proceed to the "Operating WI-CONNECT on Windows Vista and Windows 7" section.

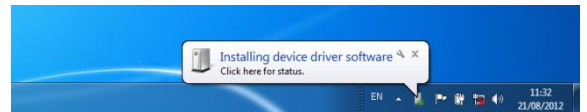


Figure 1

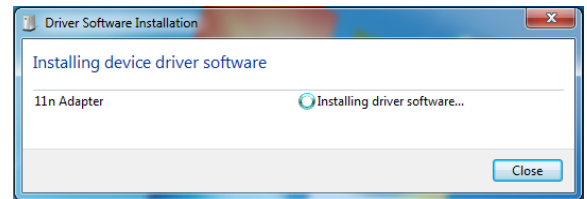


Figure 2

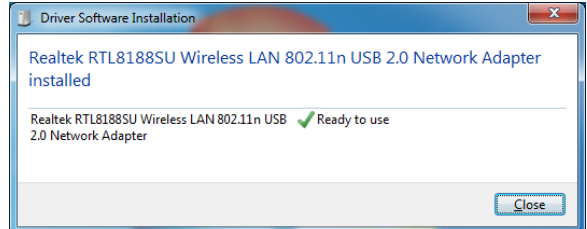


Figure 3

Installation for Windows XP, Vista and Windows 7 (Off-Line)

If you cannot connect to the internet, you can install the drivers from the supplied Digital Yacht Memory Stick.

Insert the Memory Stick in to the PC. Using Windows Explorer, browse the memory stick and run the Setup.Exe file as shown in Fig 4.

You should now see the Realtek Installation program shown in Fig 5. Click the "Next" button and the driver installation should start.

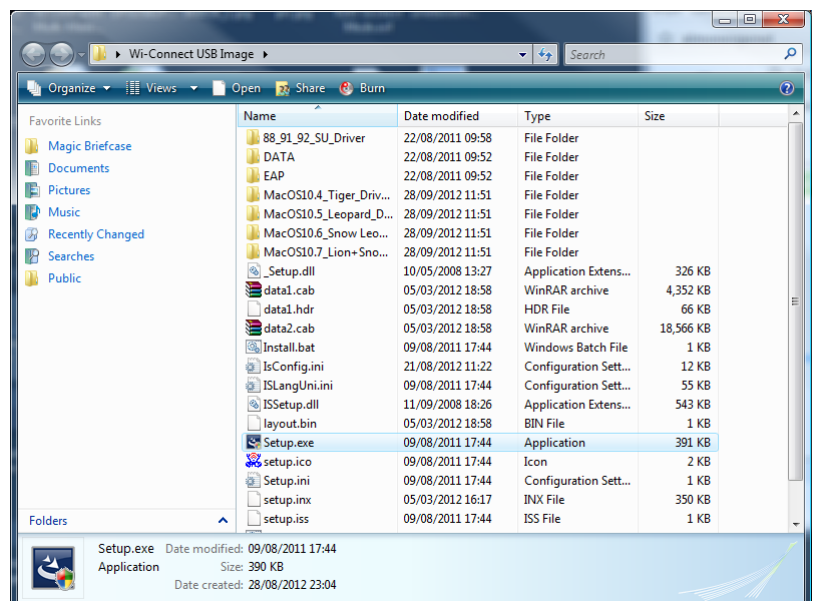


Figure 4

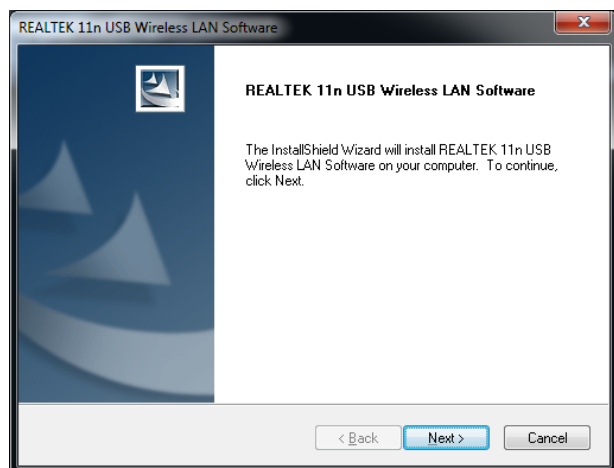


Figure 5

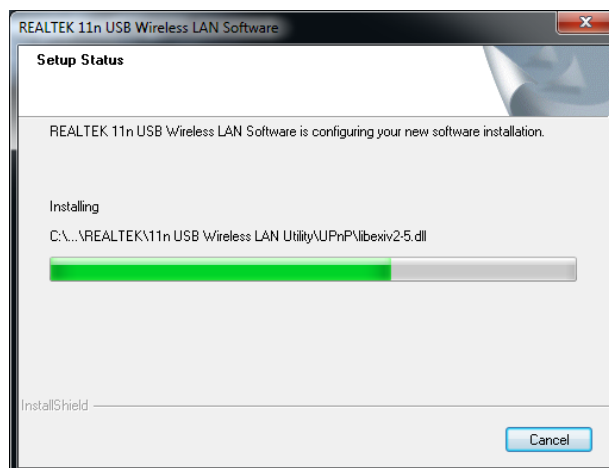


Figure 6

When the installation is finished you will be told that the computer now needs a Restart as shown in Fig 8.

If you have any other important programs or documents opened, save any work and close them, then click “Finish” and the computer will restart.

Once the computer has fully rebooted, plug in the WI-CONNECT, the new hardware function will start and a pop up window appear saying that it is Installing the drivers as shown in Fig 9.

When completed the pop up will change to the one shown in Fig 10, saying that the device software has been installed successfully. The WI-CONNECT drivers and Realtek Wireless LAN utility are now installed.

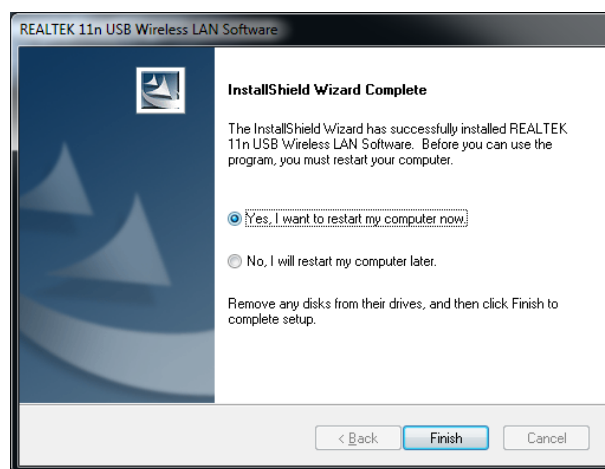


Figure 7

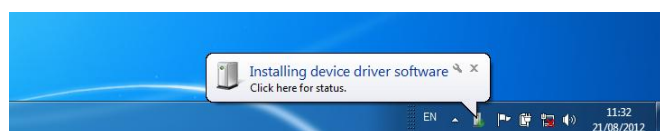


Figure 8

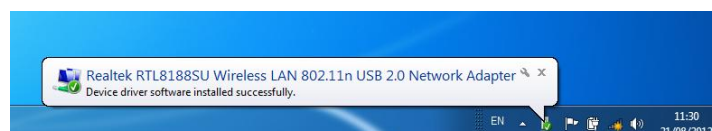


Figure 9

5. Operating the WI-CONNECT on Windows

The WI-CONNECT can be operated in two ways;

- 1) Using the standard Windows Wireless Connection Manager – simplest method under Windows Vista and 7
- 2) Using the Realtek Wireless LAN Utility – best method for older Windows XP systems (prior to Service Pack

The Realtek utility does provide some benefits over the Windows Wireless Manager that Microsoft provided, but in general most people prefer to use the standard Windows Wireless Manager which they know and are familiar with.

IMPORTANT NOTE - It is always best to turn off (disable) the internal wireless adaptor on your laptop before using the WI-CONNECT. The exact method to do this, varies from PC to PC, but some laptops have a dedicated button in or around the keyboard area or a special keyboard combination e.g. pressing the Fn + F8 keys.

Operating the WI-CONNECT on Windows Vista and Windows 7

Click on the Wireless Networks icon in the task bar (lower right hand side of the screen) and a list of the available wireless networks (hotspots) will be displayed. Your laptops internal wireless adaptor is usually named “Wireless Network Connection” and the WI-CONNECT will automatically be named “Wireless Network Connection 2” or possibly another number if other adaptors have been used previously.

It is possible to rename this connection to something more meaningful by going in to the “Network and Sharing Center” and renaming the Network Adaptor to “WI-CONNECT Wi-Fi Adaptor” or similar, so that you can be certain of which wireless adaptor you are using – as shown in Fig 17.

Click on the wireless network you wish to connect to and click the “Connect” button that will appear. You may be asked to enter a password or confirm if the network is a Public, Work or Private network (to set security levels) and then the wireless connection should be made and you will be able to connect to the internet.

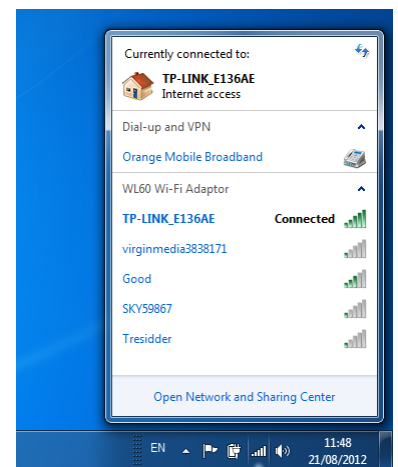


Figure 17

Operating WI-CONNECT on Windows XP - Using the Realtek Utility

To connect to a wireless network, you must run the “Realtek USB Wireless LAN Utility” which will now be one of the programs listed in the Start>All Programs menu. The first time you run this program, you will see the window displayed in Figure 18 which shows that you are not connected to a wireless network.

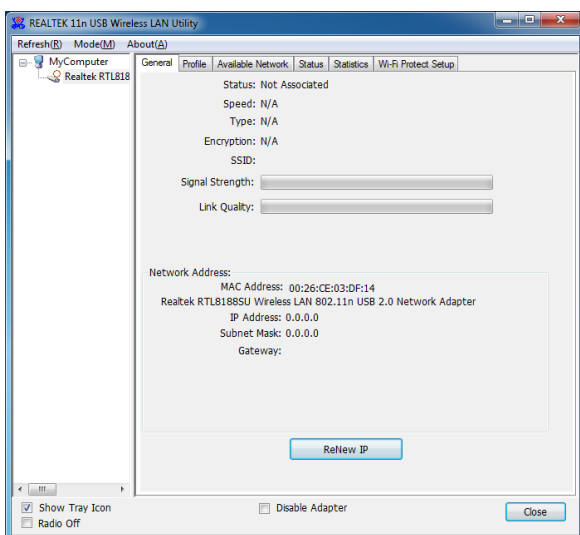


Figure 18

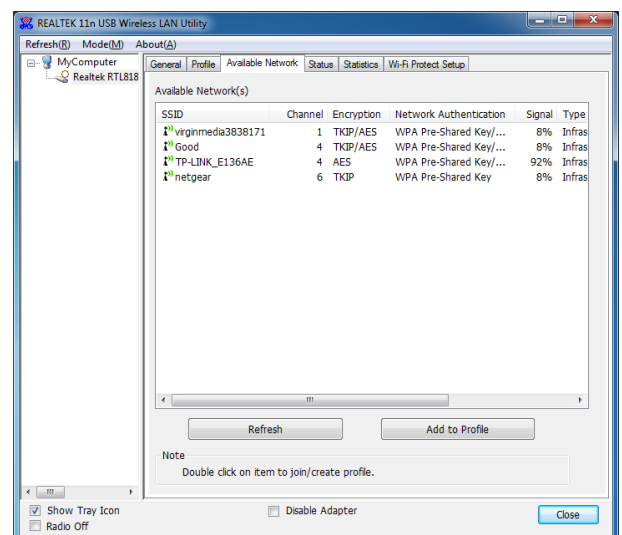


Figure 19

Click on the “Available Network” tab and the window shown in Figure 19 will appear which lists all of the available wireless networks that the WI-CONNECT can detect. Select the wireless network that you wish to connect to and click the “Add to Profile” button.

You will now be prompted to enter the Network Key (also known as Password, WEP key or Passphrase) for the network that you have selected. Consult the network operator to get the necessary password and enter this in the two boxes at the bottom of the window shown in Figure 20. Click “OK”.

Assuming that the password was correct, the WI-CONNECT should connect to the network and you will see the window shown in Figure 21.

If you click on the “General” tab you should see the window shown in Figure 22 which gives the wireless connection status.

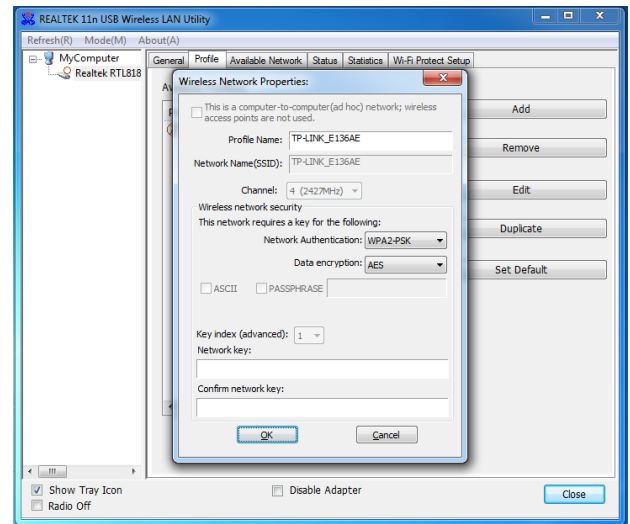


Figure 20

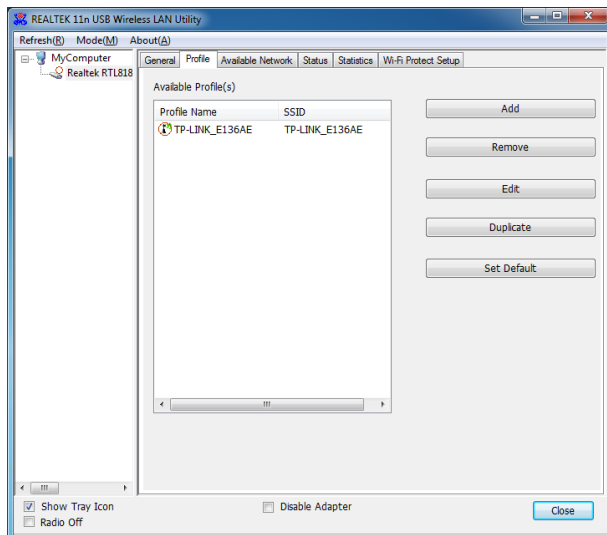


Figure 21

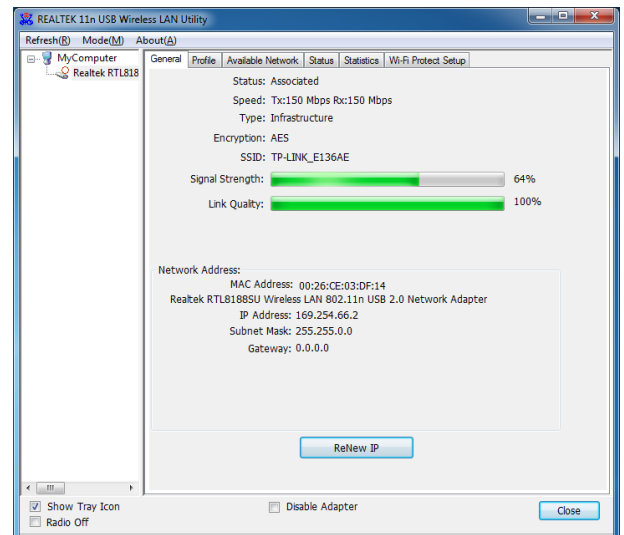


Figure 22

6. Installing and Operating the WI-CONNECT on a Mac

Insert the WI-CONNECT Drivers/Software Memory Stick in to your Apple Mac and using Finder open the folder called MacOS10.4, MacOS10.5, MacOS10.6 or MacOS10.7 depending upon the version of Mac OS X you have.

Included in each of these folders is an Installer.pkg package that you can double click on to install.

For OSX 10.8 (Mountain Lion) use the Installer in the MacOS10.7 folder which is a 64bit driver and has been successfully tested with Mountain Lion.

When you run the Installer.pkg file, the first screen that you see will be the one shown in Fig 23. Click “Continue” for this screen and the next couple of screens that are displayed. You will be asked to enter your Administrator password and then the installation will start and you will see a progress bar as shown in Fig 24.

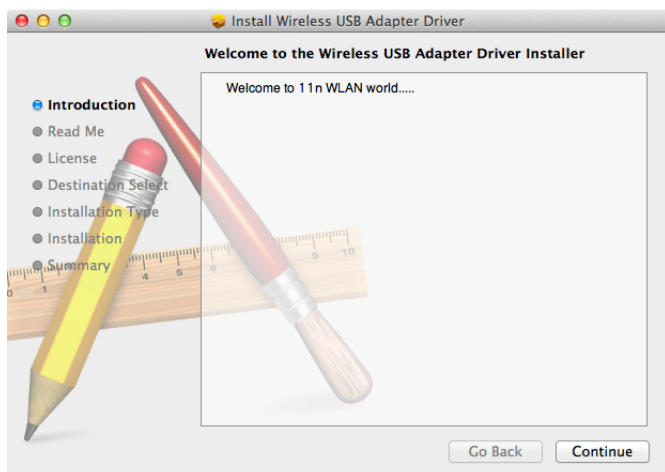


Figure 23

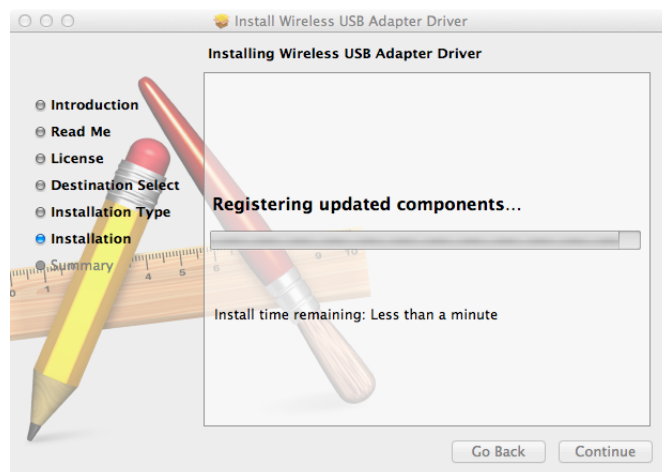


Figure 24

Once the installation is completed you will see the screen shown in Fig 25. Make sure any important programs or documents are saved and closed properly and then click “Restart”. The Mac will now close down and restart again.

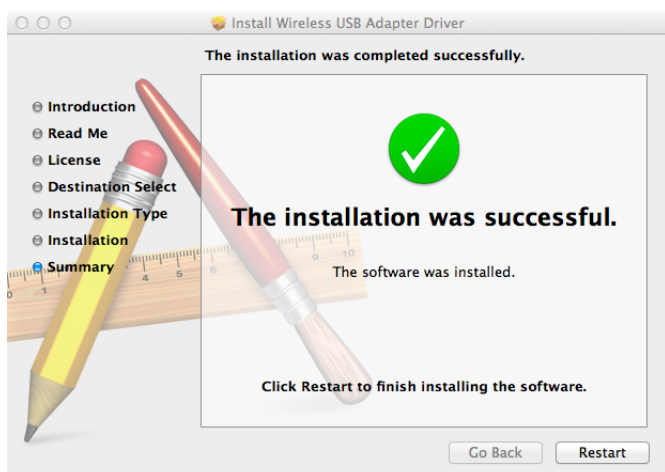


Figure 25



Figure 26

Once the Mac has restarted, plug the WI-CONNECT in to a free USB port on the Mac and two things will happen. A new Icon will appear in the Dock – as shown in Fig 26. Also a new application will open and a window similar to the one in Fig 27 will be displayed – this is the Realtek Wireless Network Utility.

Make sure that your internal Airport wireless adaptor is turned off and then click on the Available Networks tab to display a list of the wireless networks that can be detected, like the one shown in Fig 28.

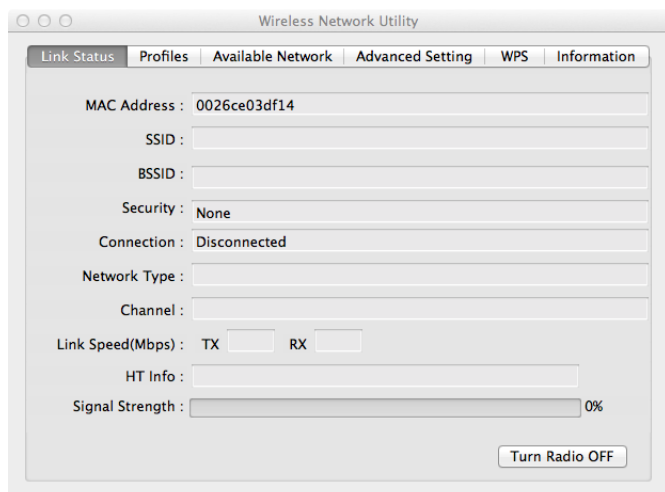


Figure 27

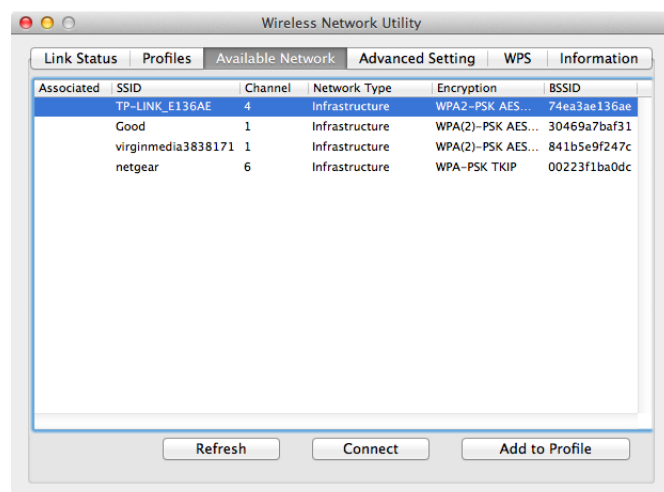


Figure 28

Select the wireless network that you want to connect to and click “Connect”. You will now see a window like the one shown in Fig 29. Enter the password of the network (if applicable) and click “OK”. The WI-CONNECT should now connect to the selected wireless network and display the General Status tab shown in Fig 30.

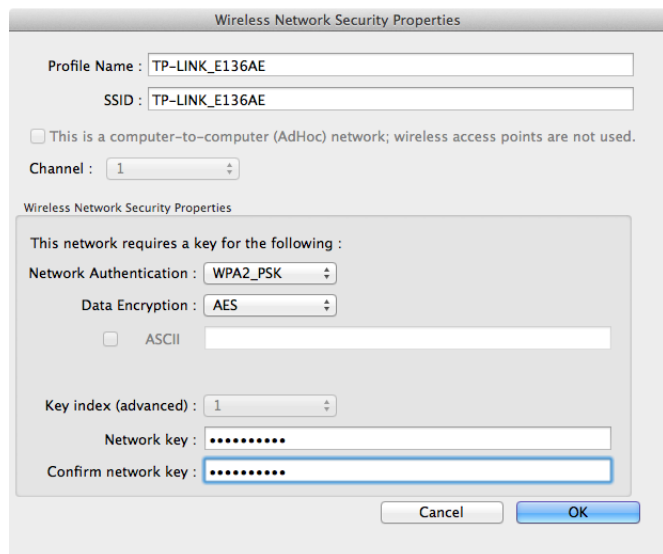


Figure 29

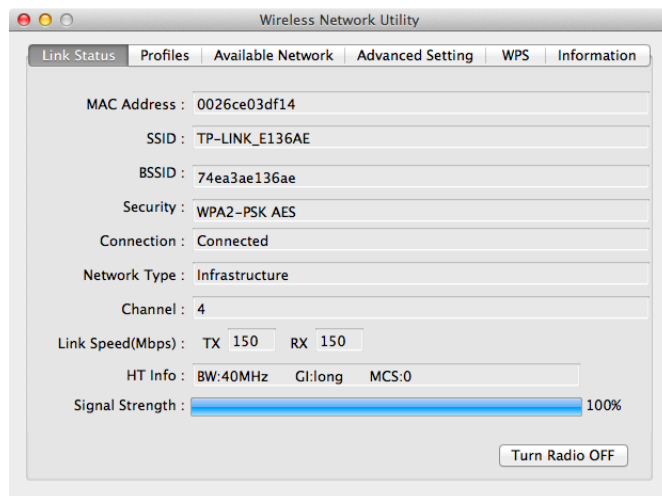


Figure 30

The network details plus the password are stored as a profile which is remembered in case you return to the network again. Click on the “Profiles” tab to display a list of the profiles you have created, as shown in Fig 31. When you return to a network, simply select it in the profile list and click “Apply”.

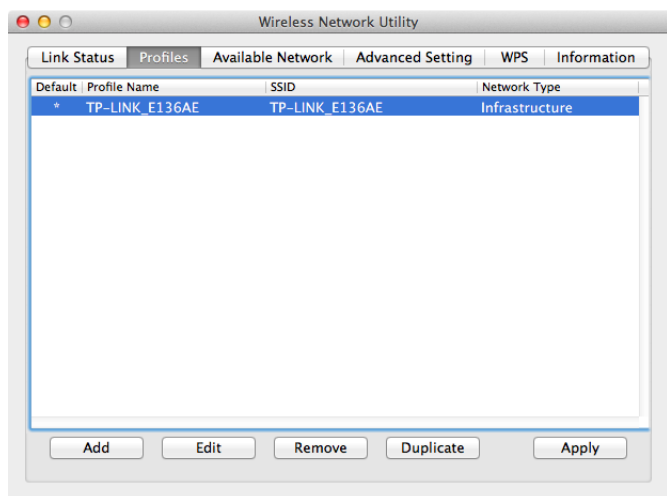


Figure 31